



# Investor Presentation

ASX Small & Mid-Cap Conference



ASX: IIQ | 20 September 2023



This presentation has been prepared by INOVIQ Limited (“INOVIQ” or the “Company”) based on information available to it as at the date of this presentation. This presentation contains general and background information about the Company’s activities current as at the date of the presentation and should not be considered to be comprehensive or to comprise all the information that an investor should consider when making an investment decision and does not contain all information about the Company’s assets and liabilities, financial position and performance, profits and losses, prospects, and the rights and liabilities attaching to the Company’s securities necessary to make an investment decision. The information in this presentation should be read in conjunction with the Company’s other periodic and continuous disclosure announcements lodged with the Australian Securities Exchange (ASX), available at [www.asx.com.au](http://www.asx.com.au). The information in this presentation is based on the Company’s own information and estimates and has not been independently verified. The Company is not responsible for providing updated information and assumes no responsibility to do so. Any investment in the Company should be considered speculative and there is no guarantee that they will make a return on capital invested, that dividends would be paid, or that there will be an increase in the value of the investment in the future.

This Presentation may contain certain “forward-looking statements” that are based on management’s beliefs, assumptions and expectations and on information currently available to management. The words “expect”, “anticipate”, “estimate”, “intend”, “believe”, “guidance”, “should”, “could”, “may”, “will”, “predict”, “plan” and other similar expressions are intended to identify forward-looking statements. Any indications of, and guidance on, future operating performance, earnings, financial position and performance are also forward-looking statements. Forward-looking statements, opinions and estimates provided in this Presentation are based on assumptions and contingencies which are subject to change without notice, as are statements about market and industry trends, which are based on interpretations of current market conditions.

Actual results, performance or achievements could be significantly different from those expressed in, or implied by, these forward-looking statements. No representation, warranty or assurance (express or implied) is given or made in relation to any forward-looking statement by any person (including INOVIQ or any of its advisers). In particular, no representation, warranty or assurance (express or implied) is given that the occurrence of the events expressed or implied in any forward-looking statements in this Presentation will actually occur. Actual operations, results, performance, targets or achievement may vary materially from any projections and forward-looking statements and the assumptions on which those statements are based.

Nothing contained in this Presentation constitutes investment, legal, tax or other advice. This Presentation does not purport to be all inclusive or to contain all information which its recipients may require in order to make an informed assessment of the Company’s prospects.

You should note that any past performance is given for illustrative purposes only and should not be relied on as (and is not) an indication of the Company’s views on its future financial performance or condition. Past performance, including past share price performance, of INOVIQ cannot be relied on as an indicator of (and provides no guidance as to) future performance including future share price performance.

# Company snapshot



## Precision focus

Precision diagnostic and exosome solutions to improve patients' lives



## Disruptive technology

Proprietary technology platforms driving future products for cancer and other diseases



## Deep pipeline

Multi-stage pipeline including SubB2M diagnostics, exosome research tools and exosome diagnostics



## Compelling data

High accuracy exosome isolation tools and diagnostics for breast and ovarian cancers



## Commercial products

Commercial exosome isolation tools and bladder cancer detection test



## Partnering for growth

Partnering with KOLs and Industry to deliver clinical and commercial outcomes

INOVIQ is developing next-generation precision diagnostics and exosome solutions to transform the diagnosis and treatment of cancer and other diseases

### Financial information (ASX:IIQ)

Ordinary shares <sup>2</sup>	92,018,702
Listed options <sup>2</sup>	5,909,965
52-week H/L <sup>2</sup>	A\$0.990-0.460
Share price <sup>2</sup>	A\$0.635
Market capitalisation <sup>2</sup>	A\$58.9m
Cash at bank <sup>1</sup>	A\$7.8m

### Share price performance



1. As at 30 Jun 2023 (ASX: 28 Jul 2023); 2. As at 15 Sep 2023

# Products and pipeline | multistage research tools and cancer diagnostic portfolio



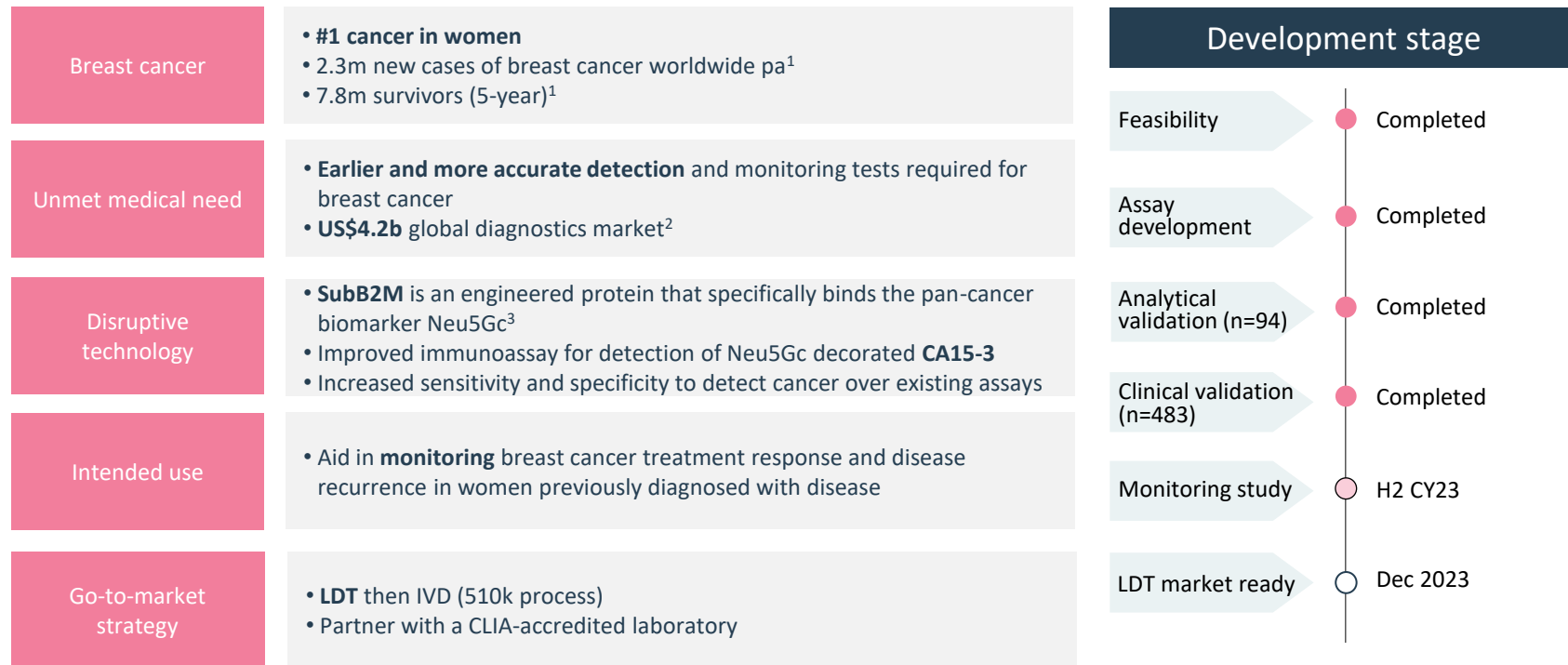
- Blood tests for **earlier and more accurate detection** of breast, ovarian and other cancers
- Exosome research tools for **exosome isolation**, biomarker discovery and diagnostics development

	PRODUCT	INDICATION	USE	RESEARCH	ASSAY DEVELOPMENT	CLINICAL DEVELOPMENT	MARKET
SubB2M Dx	hTERT <sup>1</sup>	Bladder Cancer	Adjunct to cytology	IVD-Class 1 USA			
	SubB2M-BC	Breast Cancer	Monitoring	LDT			
	SubB2M-OC	Ovarian Cancer	Monitoring	LDT			
	SubB2M-SPR	Multi-cancer	Pre-screening	LDT			
EXO tools/Dx	EXO-OC <sup>2</sup>	Ovarian Cancer	Screening	LDT			
	EXO-NET RUO	pan-EV capture	Research tool	RUO			
	TEXO-NET RUO	tumour derived-EV capture	Research tool	RUO			
	NEURO-NET RUO	brain derived-EV capture	Research tool	RUO			

NOTE: Development pipeline is indicative only, subject to review.



## Clinical-stage and progressing towards market-ready for LDT partnering by Dec 2023



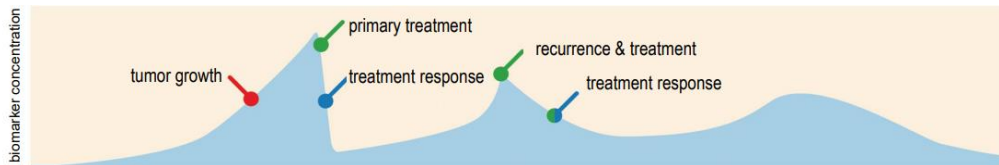


## Data | Clinical validation study

- Retrospective, case-control, **clinical validation study** in 483-samples demonstrated **SubB2M/CA15-3 test detected breast cancer across all stages with high accuracy** (AUC 0.93, 81% sensitivity and 93% specificity) and **outperformed a leading approved CA15-3 test<sup>1</sup>**

## Plans | Monitoring study

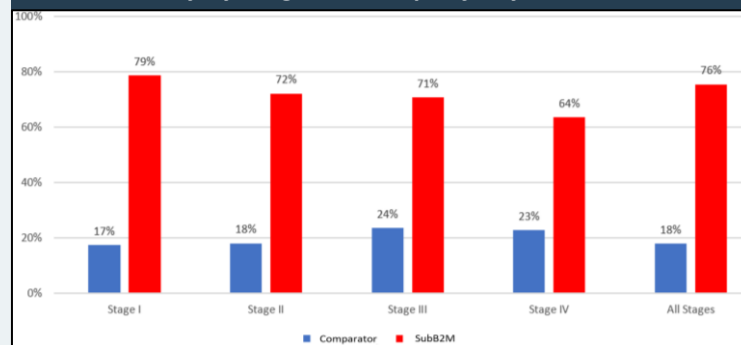
- Cross-sectional **monitoring study** to evaluate performance of SubB2M/CA15-3 test to aid monitoring of treatment response and/or disease recurrence compared to approved CA15-3 test



## SubB2M/CA15-3 and comparator CA15-3 test performance summary

Breast Cancer All Stages	SubB2M	Comparator
AUC	0.93	0.70
sensitivity	81%	37%
specificity	93%	88%
false negative rate	19%	63%
false positive rate	7%	12%
positive predictive value	92%	75%
negative predictive value	83%	58%
overall accuracy	87%	63%

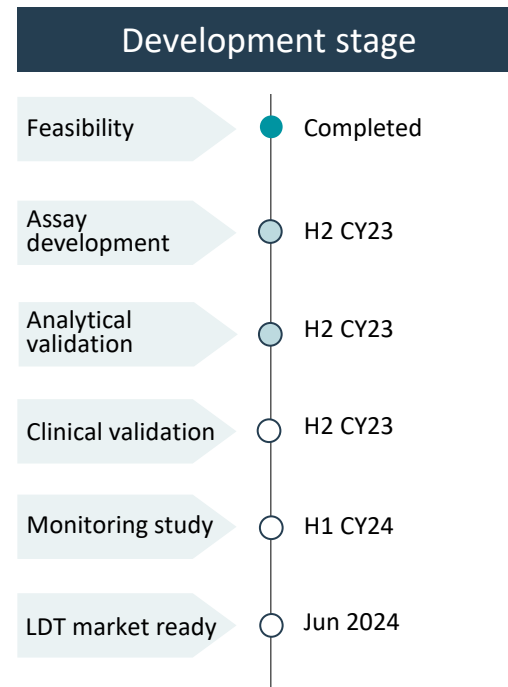
## Test Sensitivity by stage @95% Specificity





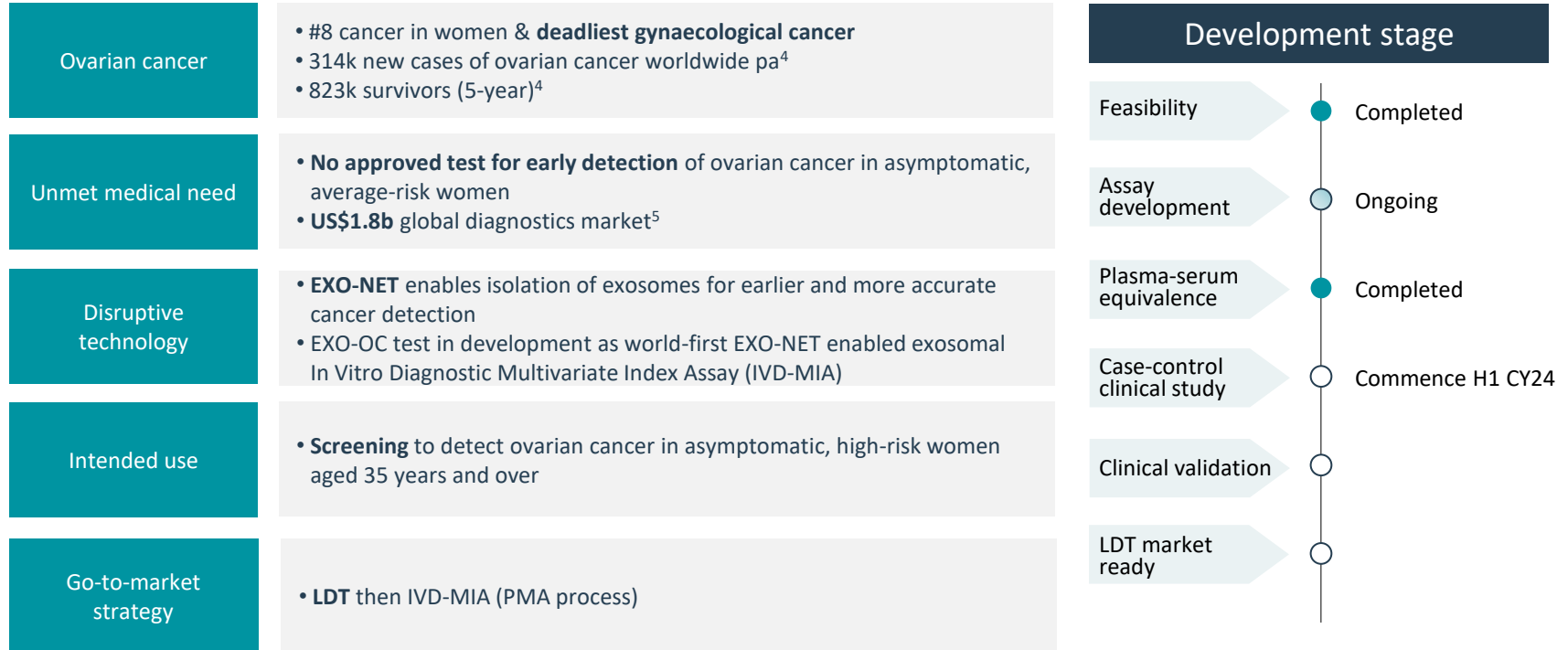
## Progressing towards clinical validation

Ovarian cancer	<ul style="list-style-type: none"><li>• #8 cancer in women &amp; <b>deadliest gynaecological cancer</b></li><li>• 314k new cases of ovarian cancer worldwide pa<sup>1</sup></li><li>• 823k survivors (5-year)<sup>1</sup></li></ul>
Unmet medical need	<ul style="list-style-type: none"><li>• <b>Earlier and more accurate detection</b> and monitoring tests required for ovarian cancer</li><li>• <b>US\$1.8b</b> global diagnostics market<sup>2</sup></li></ul>
Disruptive technology	<ul style="list-style-type: none"><li>• <b>SubB2M</b> is an engineered protein that specifically binds the pan-cancer biomarker Neu5Gc</li><li>• Improved immunoassay for detection of Neu5Gc decorated <b>CA125</b></li><li>• Increased sensitivity and specificity to detect cancer over existing assays</li></ul>
Intended use	<ul style="list-style-type: none"><li>• Aid in <b>monitoring</b> ovarian cancer treatment response and disease recurrence in women previously diagnosed with disease</li></ul>
Go-to-market strategy	<ul style="list-style-type: none"><li>• <b>LDT</b> then IVD (510k process)</li><li>• Partner with a CLIA-accredited laboratory</li></ul>

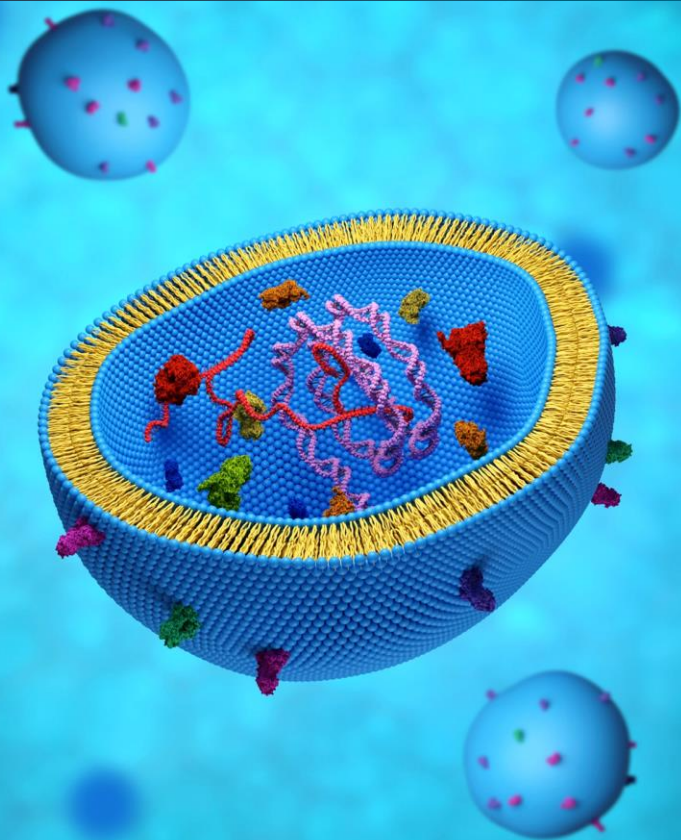




## Developing an accurate and reliable test for early detection of ovarian cancer







- Exosomes are released by cells and perform key roles in **intercellular communication, immune regulation and pathogenesis**
- Diseases elicit changes in the release of exosomes and their **molecular cargo** (DNA, RNA and proteins)
- Exosomes can be isolated from biofluids (including blood, urine and saliva) and their messages “read” to diagnose the **health or disease status** of the parent cell
- Exosome **diagnostics and therapeutics** are being developed for oncology, neurology, cardiology, immunology, inflammatory and other diseases
- Commercial potential limited by **time-consuming and inefficient exosome isolation** methods that are not suitable for commercial applications
- INOVIQ has developed **fast, efficient and scalable exosome isolation technology**

**US\$661m**  
Exosome  
research market<sup>1</sup>

**US\$8.7b**  
Exosome  
diagnostic & therapeutic  
market<sup>2</sup>



## EXO-NET PAN-EXOSOME CAPTURE

EXO-NET is a research tool for fast, efficient & scalable exosome isolation from plasma, serum, urine, saliva and cell-conditioned media<sup>1,2,3</sup>



## CUSTOMISED EXO-NET TOOLS

Design custom EXO-NET tools using ligands for specific EV populations



## EXOSOME ISOLATION

EV isolation using EXO-NET powered, fully-automated, high-throughput platform<sup>1</sup>



## BIOMARKER DISCOVERY

Biomarker discovery to identify, evaluate and validate EV-based RNA and Protein biomarkers



## DIAGNOSTICS DEVELOPMENT

EV-based clinical diagnostics, clinical trial assays and companion diagnostics



## SubB2M and EXO-NET programs moving towards key inflection points

H2 CY 2023

- ✓ EXO-NET co-marketing agreement with Promega
- ✓ Results of EXO-OC equivalence study in plasma and serum (n=250)
- Results SubB2M SPR feasibility study
- Results SubB2M/CA125 OC analytical validation study
- Results of SubB2M/CA15-3 BC monitoring study
- Progress SubB2M partnering
- TEXO-NET data @ ANZSEV23 meeting

H1 CY 2024

- Commercial progress SubB2M/CA15-3 LDT
- Results SubB2M/CA125 OC clinical validation studies
- NEURO-NET data
- New EXO-NET collaborations / partnering
- Progress EXO-OC test collaboration and clinical data

## **INOVIQ Ltd**

23 Normanby Road  
Notting Hill VIC 3168  
Australia

p. +61 3 9548 7586

e. [info@inoviq.com](mailto:info@inoviq.com)

w. [www.inoviq.com](http://www.inoviq.com)

## **Dr Learne Hinch**

Chief Executive Officer

e. [lhinch@inoviq.com](mailto:lhinch@inoviq.com)